

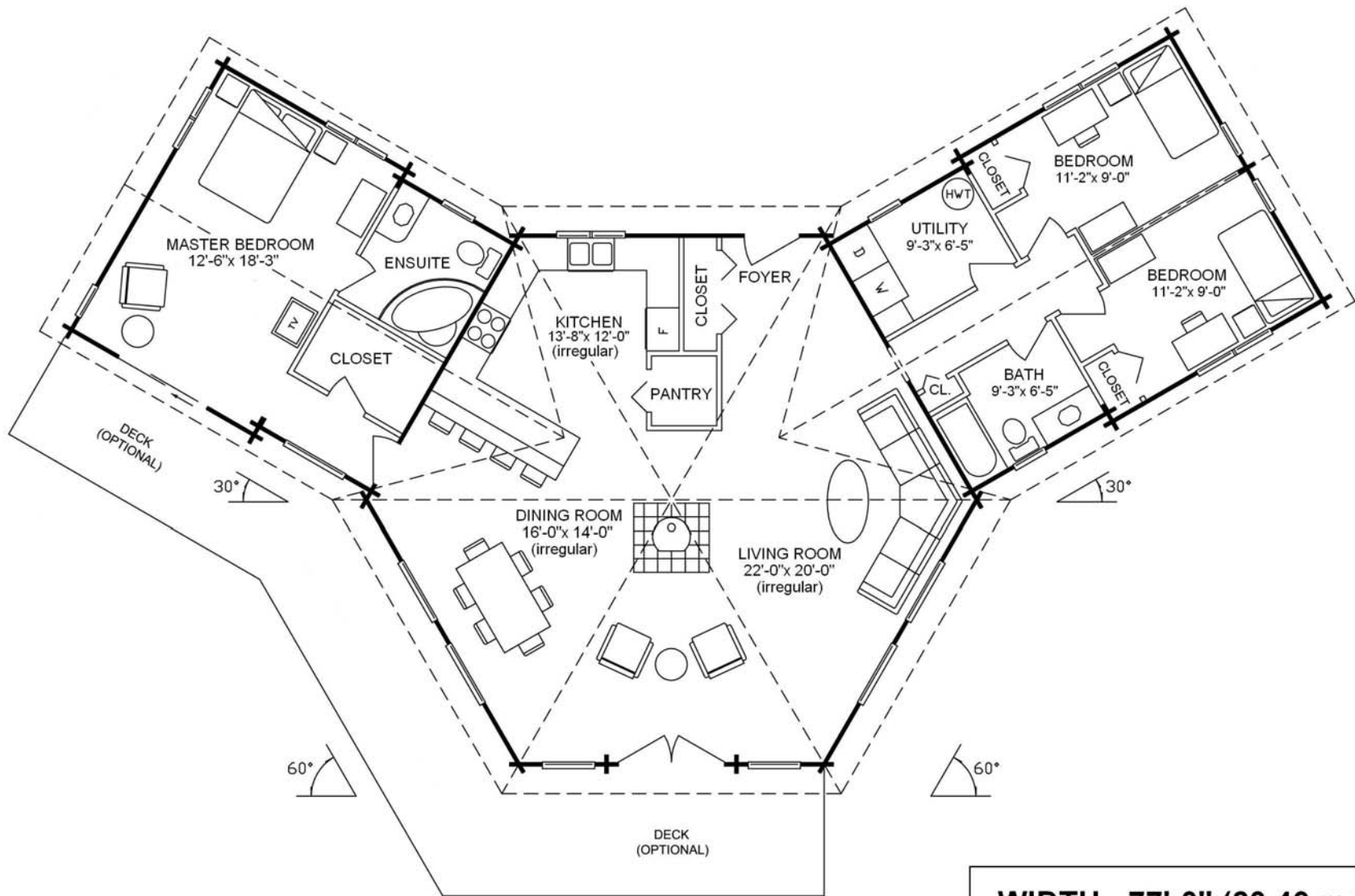
1735 sq.ft. / 161.21 sq.m.
Call 1 800 665 0660 or visit us at www.panabode.com

The Denman offers an exciting hexagonal floor plan with expansive great room encompassing kitchen, dining and living areas under a vaulted open beam cathedral ceiling, surrounded by glass and centered on an open fireplace. Modules either side of the great room contain a master en-suite bedroom and a two bedroom combination with separate bathroom respectively.



Denman

pan-abode[®]
THE ORIGINAL



WIDTH - 77'-0" (23.49 m.)
DEPTH - 45'-3" (13.8 m.)

pan-abode®
 THE ORIGINAL
 ALL DESIGNS, PLANS AND
 RENDERINGS © COPYRIGHT
 PAN-ABODE INT. LTD.

MAIN FLOOR PLAN
 1735 sq. ft. (161.21 sq. m.)