

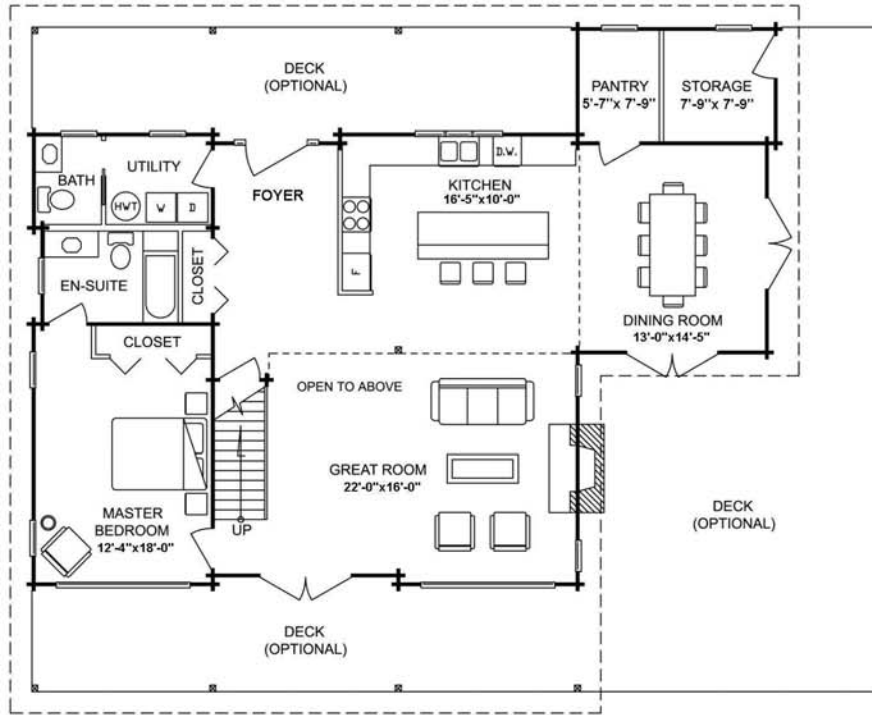
2243 sq.ft. / 208.37 sq.m.
Call 1 800 665 0660 or visit us at www.panabode.com



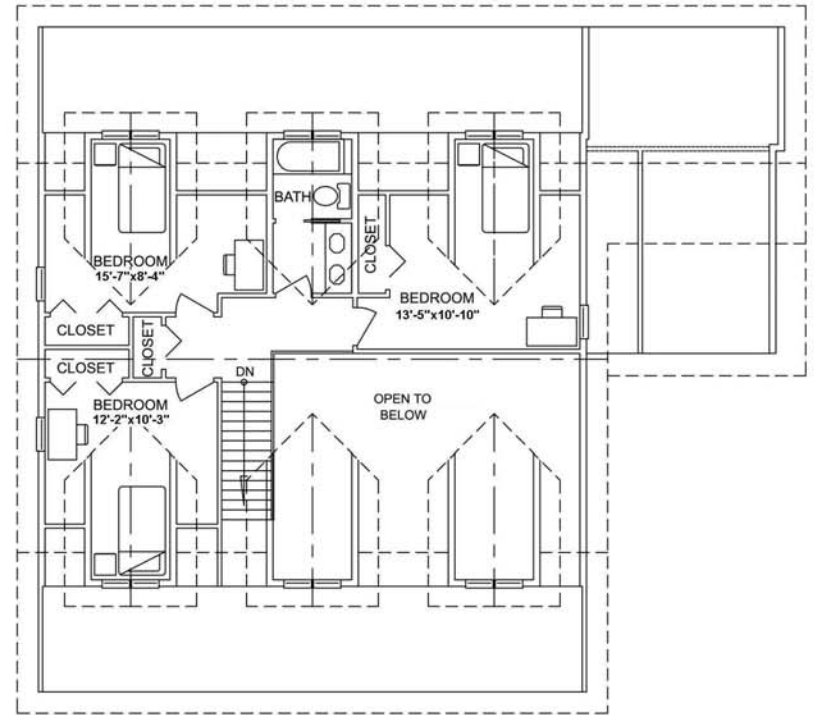
This spacious four-bedroom, two and a half bathroom floor plan features nine-foot ceilings throughout, an open design which includes vaulted ceilings in the great room and an oversized kitchen area with pantry. Its large size and open concept make it the perfect family home or vacation getaway to be shared with your friends. To complete your Pan-Abode dream home, you can add optional decks, perfect for enjoying those weekend barbeques.

Montana

pan-abode[®]
THE ORIGINAL



MAIN FLOOR PLAN
1529 sq. ft. (142.06 sq. m.)



UPPER FLOOR PLAN
714 sq. ft. (66.31 sq. m.)

TOTAL AREA
2243 sq. ft. (208.37 sq. m.)

WIDTH - 52'-6" (16.0 m.)
DEPTH - 39'-4" (12.0 m.)
(NOT INCLUDING PORCHES)

